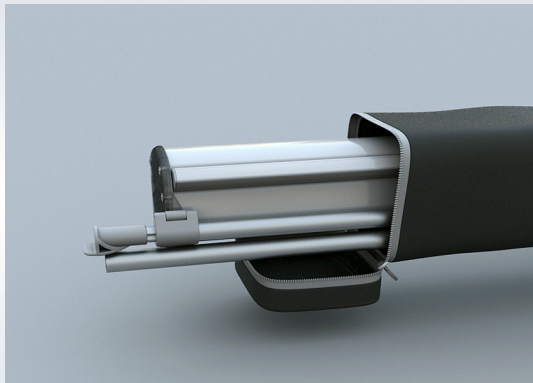




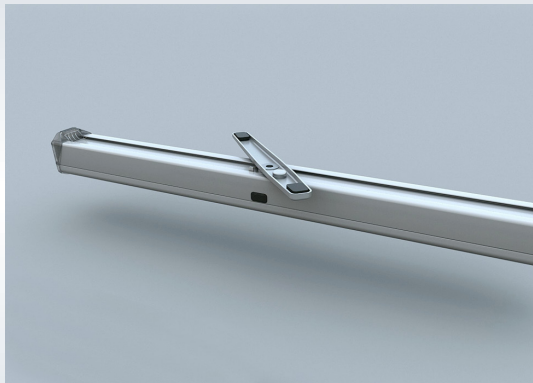
SET UP
INSTRUCTION
ROLL UP COMPACT

1



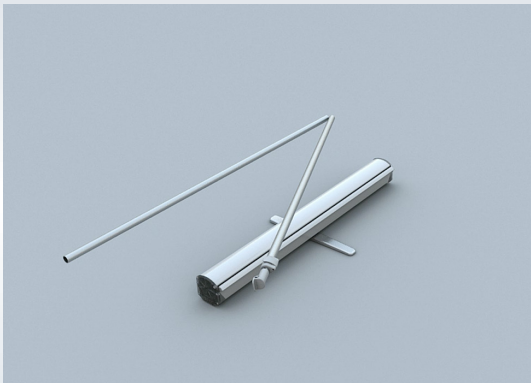
Take the parts out of the bag.

2



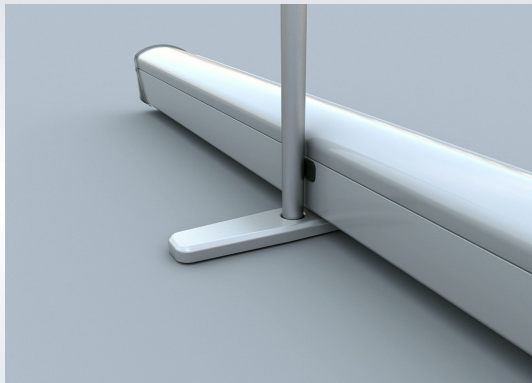
Unfold the stabilising foot and place the cassette on a flat surface.

3



Unfold the 2-part supporting rod. Make sure that the parts click in each other.

4



Place the supporting rod into the hole of the stabilising foot.

5



Pull up the graphic panel and attach the top profile to the top fastener of the supporting rod.

6



Loosen the lock lever on the telescopic rod.

7



Chose desired height and seceure with the lock lever.

8



Verify that the system is even. **READY!**