

Instruction Manual



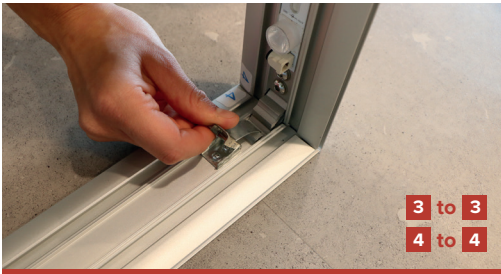
1. Take the bottom part and twist out the feet.



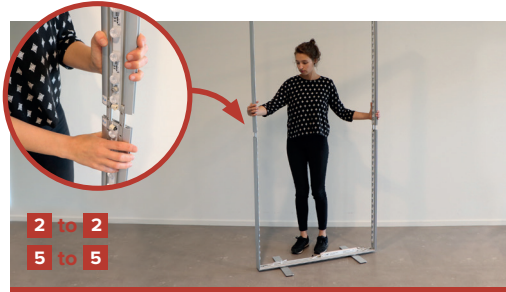
2. Slide in the first two side-segments, according to the numbers indicated on the stickers.



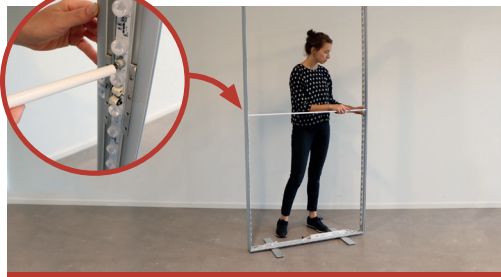
3. Use the clips on both sides to secure the connection. You now have an U-shaped construction.



4. Assemble the second U-shape, by connecting the remaining side-segments to the top part.



5. Lift the top part of the frame and put the two U-shapes together, according to the numbers.



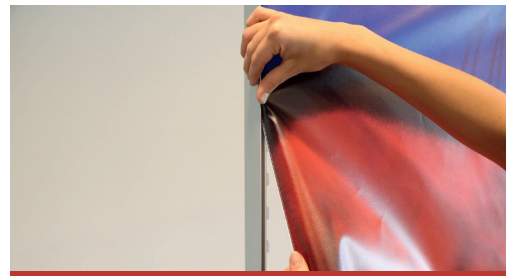
6. Attach the support pole horizontally in the frame by placing it over the aluminium buttons on both sides.



7. Use the cables that are attached to the bottom part and link them to the side-segments.



8. Take the two loose cables and use them to link the upper part to the lower part.



9. Attach the fabric on both sides, by pushing the silicone edges in the grooves.



10. Start in the corners to divide the tension and work your way around the frame until all silicone edges are attached.



11. Link the power supply cable to the plug at the backside of the frame and twist the cap to secure the connection.



12. The lightbox is now ready to use.



Scan for instructional video