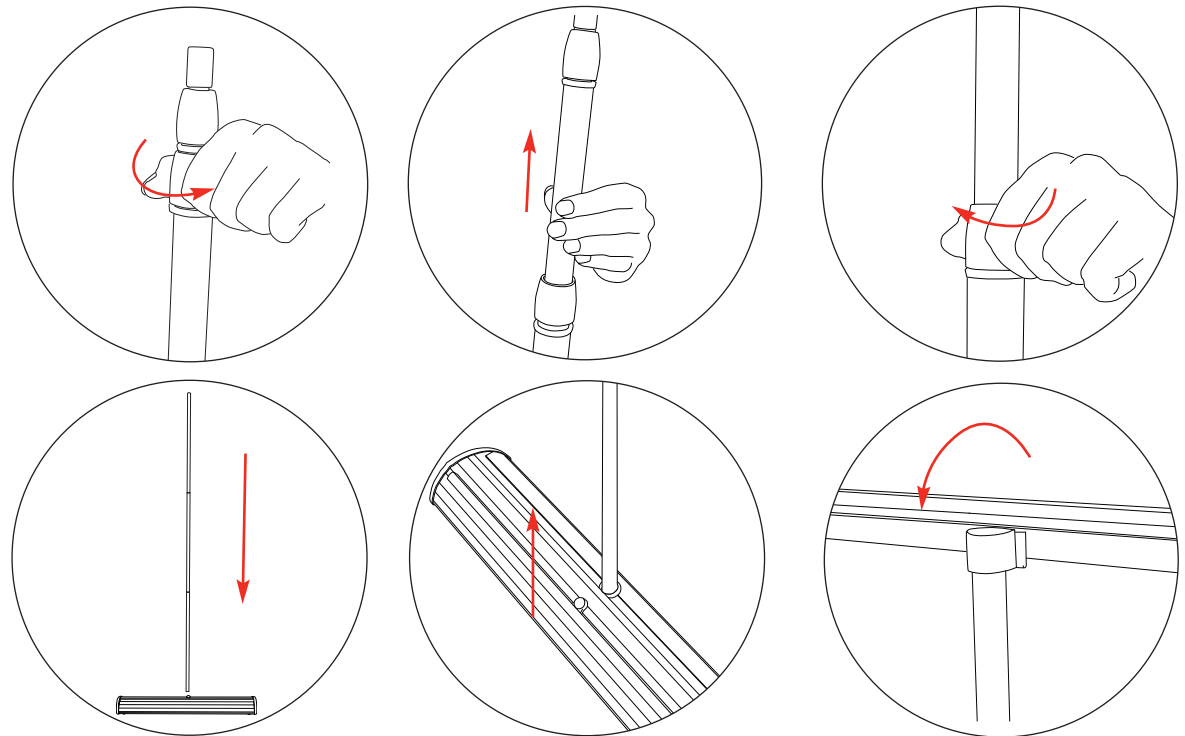




Recommened Graphic Thickness: 225-450microns  
Total Visual Graphic Area: 800x2130mm  
Total Visual Graphic Area: 1000x2130mm

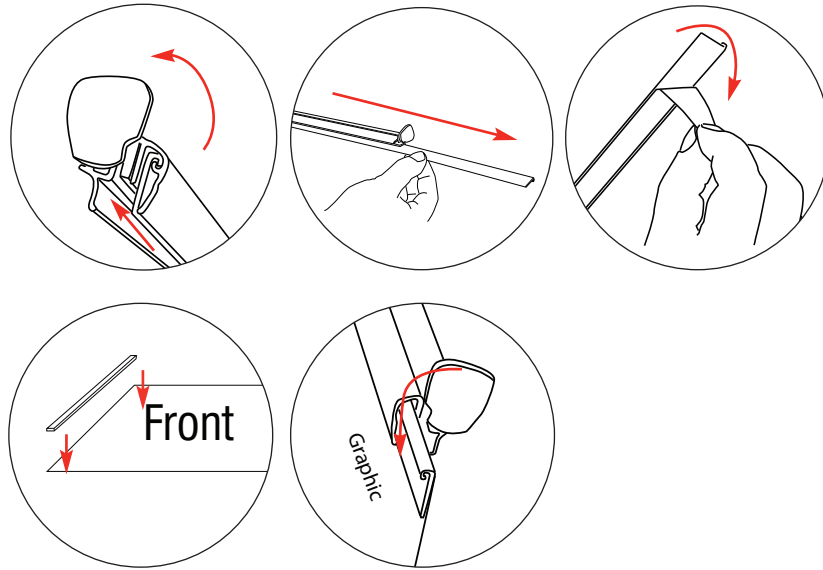
Include a 150mm at the bottom(non-visible area in roller mechanism)

### Assembly

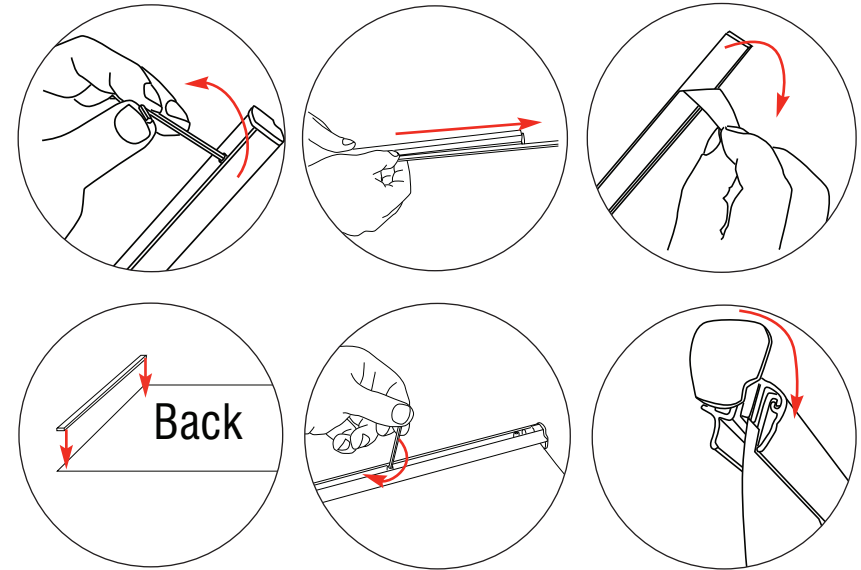


## Top Rail Attachment

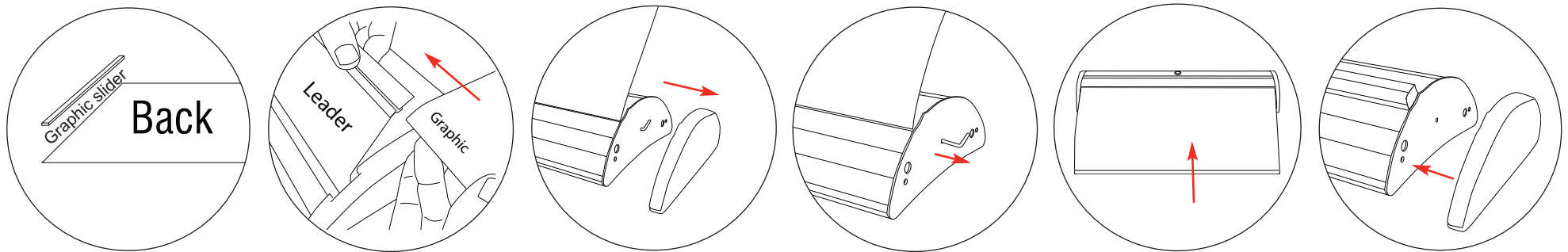
Option 1 (Adhesive Rail Option)



Option 2 (Clamp Rail Option)



## Bottom Graphic Attachment



**WARNING:** Banner is pre-tensioned always attach graphic to Leader and top rail before removing the locking pin.